

NetPath™ 2000 Wireless Access Router

Broadband Access Solutions

HIGHLIGHTS

- Ideal solution for backup links, portable connections, and supporting remote data links
- Plug-and-play PCMCIA WAN slot for UMTS, Edge, and GPRS wireless cards
- Create secure networks with the internal VPN client
- Full routing and NAT bypass
- User-friendly webserver interface
- Supports VPN pass-through for existing secure networks



In today's ultra-competitive business climate, business customers need and demand continuous, instantaneous access to data networks – be it access to their corporate data network or access to the Internet. The ability to share data and access information in real time is essential. Simply put – there's no time for downtime.

The NetPath™ 2000 is a high-speed wireless broadband solution that enables small businesses and enterprises to connect their remote offices, retail locations, and mobile operations to their corporate networks via high-speed wireless technology. The NetPath 2000 offers a reliable approach for link redundancy in case wire lines are disrupted; it can quickly enable users to set up their networks in portable or remote locations, and can serve as a flexible POS client.

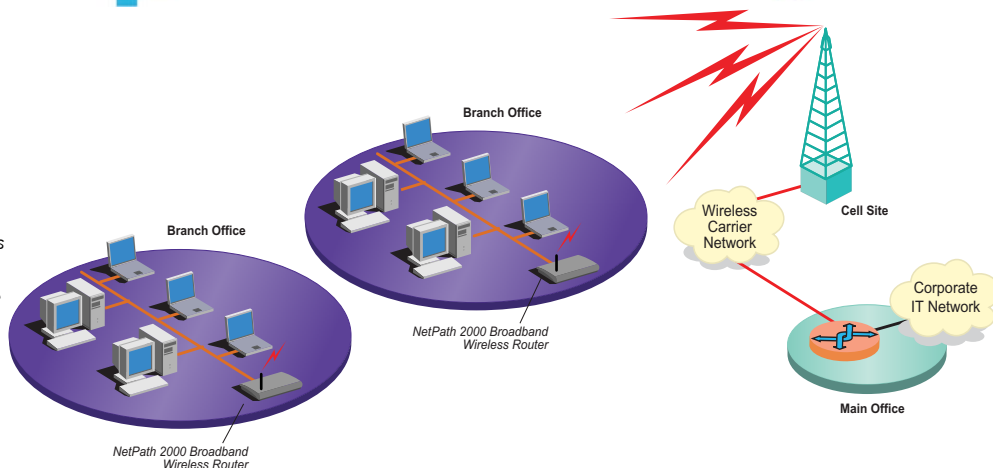
Designed for access to any type of high-speed wireless network, NetPath 2000 features a plug-and-play PCMCIA WAN slot for UMTS, Edge, and GPRS wireless cards. Programmable APN capabilities allow interoperability with various service providers' level of service to include proxy access, public APNs, or full custom APNs.

The NetPath 2000 provides routing to support a wide range of applications including Internet access, enterprise networking, and VPN pass-through. An internal VPN client option enables full IPSEC security capability that is interoperable with a variety of VPN servers including Cisco, Nortel, and Microsoft. The product is easy to install with auto-synchronization to the wireless network and easy to configure and manage via a Web-based Graphical User Interface (GUI).



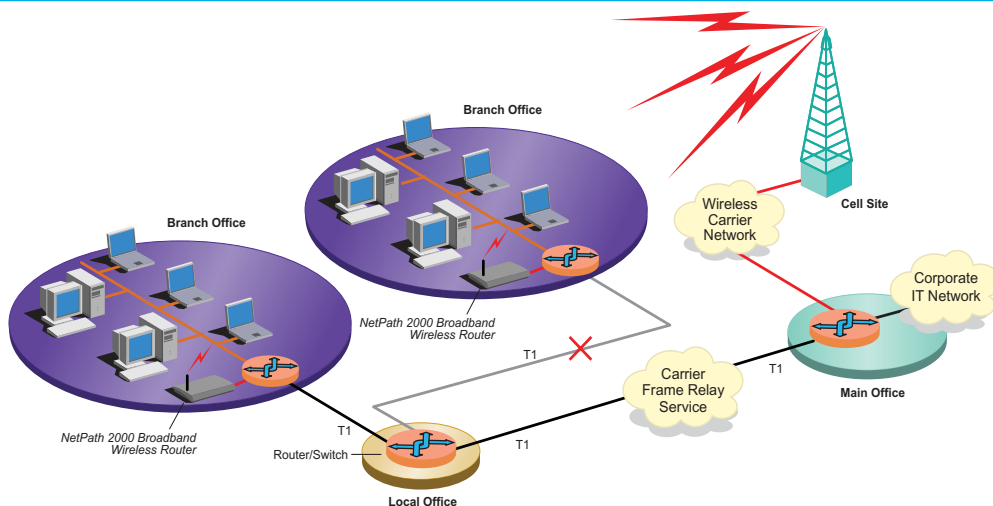
High-Speed Data Access

The Verilink NetPath 2000 broadband wireless router is an ideal solution for broadband access over UMTS, Edge, and GPRS wireless networks where wireline facilities are not available or are not cost-effective.



Disaster Recovery

The Verilink NetPath 2000 broadband wireless router is an ideal solution for building redundancy into mission-critical distributed network applications. In case of a primary service outage over wireline connections such as T1 or DSL, the NetPath 2000 provides continuous broadband service over UMTS, Edge, and GPRS wireless network connections.



HARDWARE INTERFACES

Ethernet Port 0 – Management Interface RJ-45 auto-negotiation of 10/100Mbps links

Ethernet Port 1 – Wireless Backhaul Router local network Interface RJ-45 auto-negotiation of 10/100Mbps links

DC Power with external supply provided. IEEE802.3af POE support optional

ROUTING AND WIRELESS NETWORKING FEATURES

Routes IP packets between the wireless network card and both Ethernet ports

NAT support with capability to disabling for public address usage (applicable to custom APNs)

Programmable Keep-alive capabilities permits user to assure link operation in units from 1 to 30 minutes or disable

DHCP Support for management and network interfaces

VPN Client optional interoperable with Cisco, Nortel, and Microsoft VPN servers. Supports automatic keying authentication using x.509 certificates, 3DES tunnel encryption authenticated using MD5 or SHA, and IPComp per RFC2393

VPN pass-through support

Multiple Profile Support (APNs) to include proxy, public, Internet, and customer-specific

MANAGEMENT

Web-based GUI

Remote and local access

Full configuration control, status and statistics

RSSI (signal strength) capabilities

Telnet, FTP, TFTP

SNMP Monitoring

RFC1213 MIB-II

Secure Management Access

Access via SSH

Local and remote SW update capability

WIRELESS NETWORK INTERFACES

Cingular Cellular Network

Novatel Merlin U520 UMTS

Sony Ericsson GC83 EDGE

Sierra Wireless AC775 EDGE

ENVIRONMENT AND REGULATORY

0 to 40 degrees centigrade

0 to 90% humidity, non-condensing

Tested to meet FCC Class A requirements and UL approval

WARRANTY AND SUPPORT

Five-year warranty

©2005 Verilink Corporation. Verilink, the Verilink logo, and WANsuite are registered trademarks of Verilink Corporation. Other brands or products mentioned may be trademarks or registered trademarks of their respective owners.

This document does not create any express or implied warranty about Verilink or about its products or services. Verilink's sole warranty is contained in its product warranty. The end-user documentation shipped with Verilink products constitutes the sole specifications referred to in the product warranty. Verilink has made reasonable efforts to verify that the information contained herein is accurate, but Verilink assumes no responsibility for its use or any infringement of patents or other rights of third parties that may result. The customer is solely responsible for verifying the suitability of Verilink's products for its use. Specifications are subject to change without notice.

DS-xx-xxxx (Rev. 4.19.05)



1-800-Verilink
sales@verilink.com
www.verilink.com