

# WANsuite® 64X0A/AB Family ATM over SHDSL

Next-Generation Packet Network Access

## HIGHLIGHTS

- **SHDSL** WAN Access Device/IP Router
- **Symmetrical data** rates from 192 kbps to 2.312 Mbps
- **Software configurable** T1 or E1 interface for Circuit Emulation Service (CES)
- **IP Router** enables IP packet routing using static or dynamic protocols
- **Supports** NAT/NAPT, PPP/NAPT, and DHCP server and client
- **AAL1 to support legacy TDM** equipment. **AAL5** for data transport
- **Supports** RFC 1483 and 2364 encapsulation
- **Up to 20 PVCs**
- **Supports** IEEE 802.1D transparent, self-learning bridge
- **Web-server interface** for remote access/management – password lockout
- **ServiceAware™ technology** for maximizing available WAN bandwidth and verifying SLAs



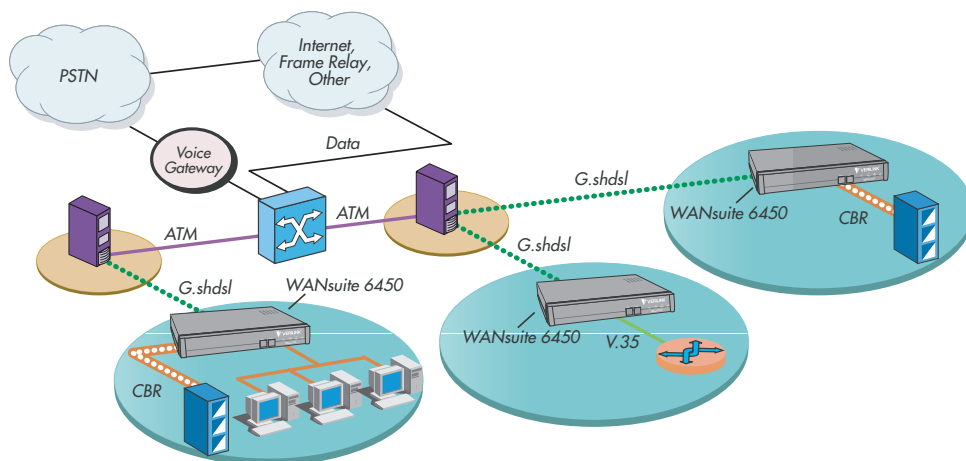
Verilink's WANsuite 64X0A/AB WAN Access products extend our popular line of customer premises equipment products into the ATM over g.SHDSL access space. These units are built upon Verilink's innovative, next-generation WAN access architecture. The WANsuite 64X0A/AB products terminate a standards-based Symmetrical High-bit Rate Digital Subscriber Line (SHDSL) that originates from a Digital Subscriber Line Access Multiplexer (DSLAM) and provides interfaces for the end user's communications equipment. The CES functionality makes it ideally suited for supporting legacy equipment. Whether connecting a PBX to the CBR port for TDM voice traffic (AAL1) or an existing router to the serial interface for data (AAL5), the WANsuite 64X0A/AB provides a cost-effective CPE/CLE tool for today's small and medium sized businesses.

Each unit is equipped with a network port, 10/100Base-T Ethernet port, and supervisory port. The 6410A/AB has one CBR port (either modular 8-pin or BNC). The 6430A has one multiprotocol serial port. The 6450A/AB has both CBR and serial ports.

The IP Gateway feature enables IP packet routing throughout the LAN/WAN network architecture using a static routing configuration or dynamic routing protocols, substantially reducing the need to purchase costly routers.

The unit is simple to configure and manage using the web based interface for remote access to diagnostics and reporting.

Verilink continually seeks solutions to problems associated with space limitations, high network costs, and configuration. The WANsuite next-generation access devices give our customers greater flexibility and higher capacity than single-purpose devices – for about the same price.



Legend



**WANsuite 64X0A/AB**

SHDSL IAD (200kbps – 2.320Mbps)  
 T1 or E1 Circuit Emulation  
 Asynchronous Supervisory Port  
 10/100Base-T Ethernet port (works with cross-over or straight-thru cable!)  
 Management via EOC (g.SHDSL related parameters), WANsight (web-based interface), local supervisory port  
 QoS: CBR, UBR, VBRnrt

**MODEL NUMBERS**

(LAN side ports referenced)  
 6450A – Serial and CBR (8-pin) ports  
 6450AB – Serial and CBR (BNC) ports  
 6430A – Serial port only  
 6410A – CBR (8-pin) port only  
 6410AB – CBR (BNC) port only

**SERIAL INTERFACE**

(6450 and 6430 only)  
 DB-25 connector  
 DTE/DCE selectable pin assignments  
 Supports RS-232, V.35, V.36, EIA-530, EIA-530A, and X.21  
 Protocols: PPP, HDLC, AAL1, AALS

**ETHERNET INTERFACE**

10/100Base-T auto-sensing  
 Auto-detection works with x-over and straight-thru Ethernet cables  
 Protocols: TCP/IP, RIPv1&2, OSPF  
 IP Addressing: DHCP (client & server)  
 Security: NAT, PAT  
 IEEE 802.1D transparent, self-learning bridge

**CBR PORT**

(6450 and 6410 only)  
 8-pin modular (RJ-45) or BNC available

**T1 Mode**  
 Line Rate: 1.544 Mbps  
 Line Framing: D4, ESF, or Unframed  
 Line Coding: AMI or 8BZS

**E1 Mode**  
 Line Rate: 2.048 Mbps  
 Line Framing: CCS, CAS, or Unframed  
 Line Coding: AMI or HDB3  
**Timing:** Network, AAL1 adaptive  
 AAL1, Circuit Emulation Service (af-vtoa-0078.000)  
 Mode: short haul, long haul

**NETWORK INTERFACE**

8-pin modular (RJ45) connection  
 Line Rate: 200 kbps to 2.320 Mbps  
 Line Framing: ATM transport (G.991.2)  
 Line Coding: Trellis Coded Pulse Amplitude Modulation  
 Network Protocol: ATM  
 AAL1 and AALS  
 Up to 20 PVCs (1 PVC for CES)

**MANAGEMENT INTERFACES**

EOC for SHDSL related parameters  
 SNMP  
 Embedded web server  
 Telnet  
 Local Supervisory Port (VT100)

**FRAME RELAY / ATM**

(Serial port only)  
 FRF.5, FRF.8

**DIAGNOSTICS**

Performance: 15 min, 24 hr, 30 day monitoring (sampled every second)  
 Network Loop: SHDSL network loopback

**INDUSTRY LISTINGS**

FCC 47CFR Part 15, Class A  
 EN55022, Class A  
 EN55024  
 EN6000-3-2  
 EN6000-3-3, AS/NZS CISPR 22  
 VCCI  
 ANSI/UL 60950-1  
 CAN/CSA C22.2 No. 60950-1  
 CENELEC EN60950-1  
 IEC 60950-1 (2001-10)  
 AS/NZS 60950 : 2000  
 Industry Canada Reg. # 2097B 6450A  
 ITU.T 991.2 Annex B  
 AS/ACIF S043  
 AS/ACIF S003  
 ACTA Reg. # GICDLNAN6450A

**POWER REQUIREMENTS**

Voltage: 100-240 VAC  
 Frequency: 50-60 Hz  
 Dissipation: 10 W max (27.4 BTU/hr)

**MECHANICAL**

Standalone (Desktop)  
 Dimensions: (W x H x D)  
 30.0 cm x 4.6 cm x 21.1 cm  
 11.8 in x 1.8 in x 8.3 in  
 Weight: 0.83 kg (1.82 lbs)

**ENVIRONMENTAL**

Operating Temp: 0-50 °C (32-122 °F)  
 Storage Temp: -20 to 65 °C (-4 to 149 °F)  
 Humidity: 95% max, non-condensing



6450AB shown

©2005 Verilink Corporation. Verilink and the Verilink logo are registered trademarks of Verilink Corporation. Other brands or products mentioned may be trademarks or registered trademarks of their respective owners.

This document does not create any express or implied warranty about Verilink or about its products or services. Verilink's sole warranty is contained in its product warranty. The end-user documentation shipped with Verilink products constitutes the sole specifications referred to in the product warranty. Verilink has made reasonable efforts to verify that the information contained herein is accurate, but Verilink assumes no responsibility for its use or any infringement of patents or other rights of third parties that may result. The customer is solely responsible for verifying the suitability of Verilink's products for its use. Specifications are subject to change without notice.

**VERILINK®**  
 1-800-Verilink  
 sales@verilink.com  
 www.verilink.com